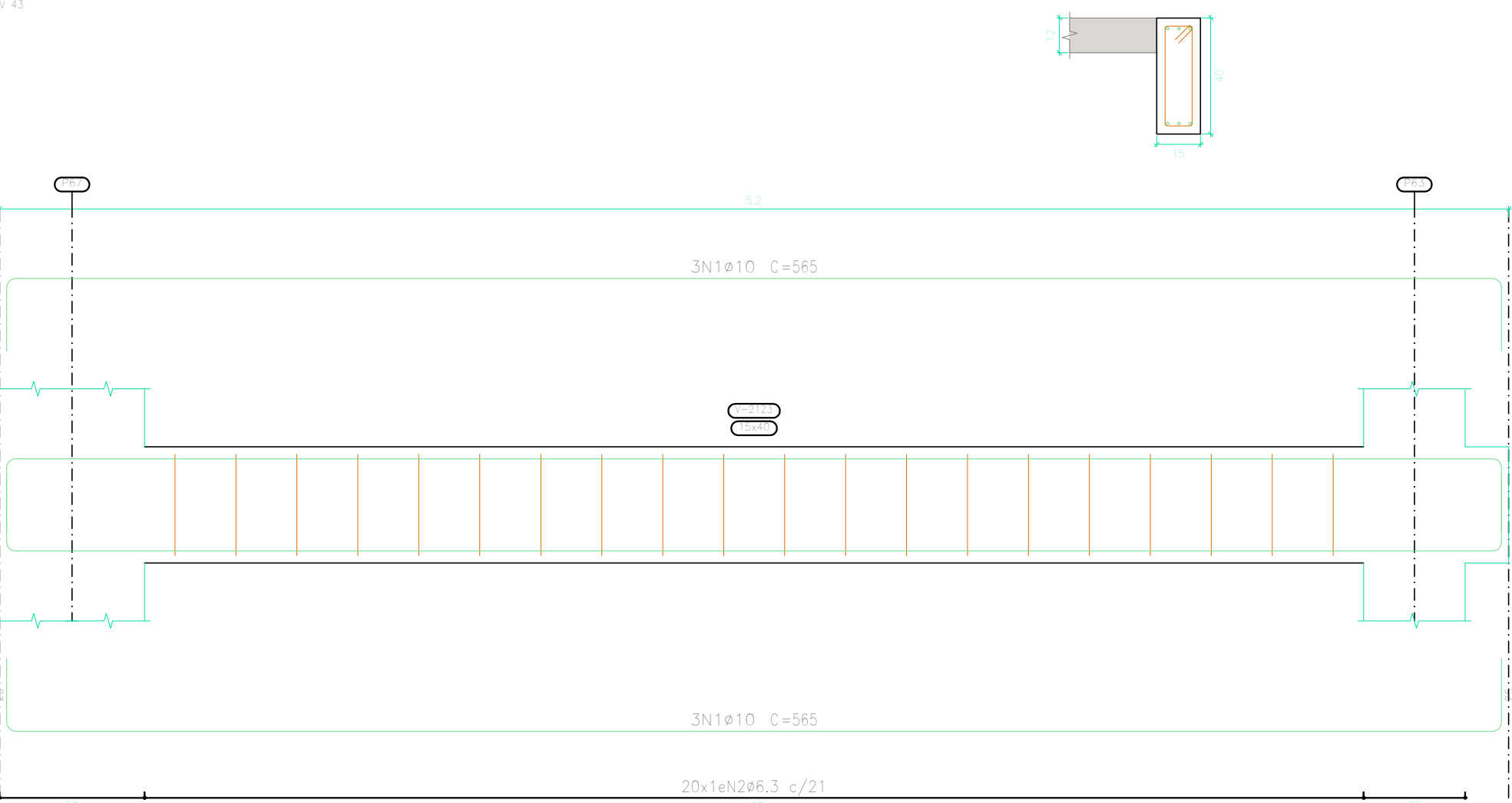


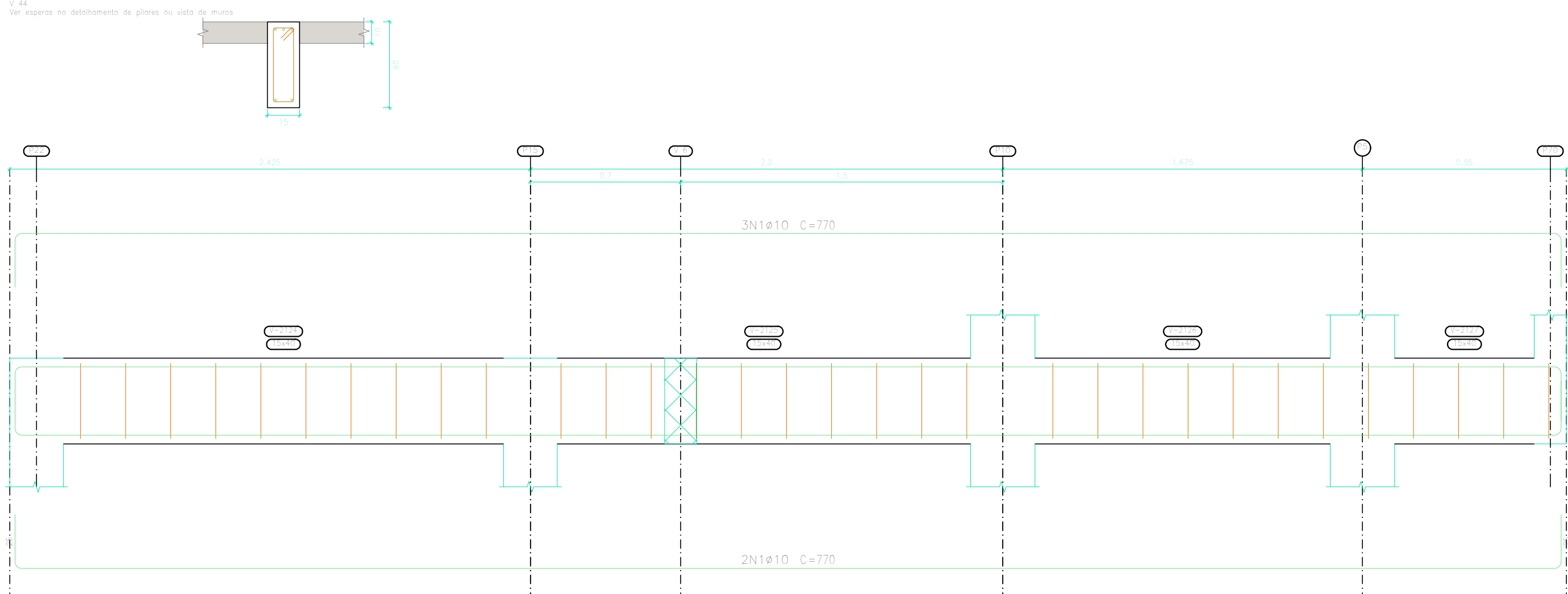




V 43



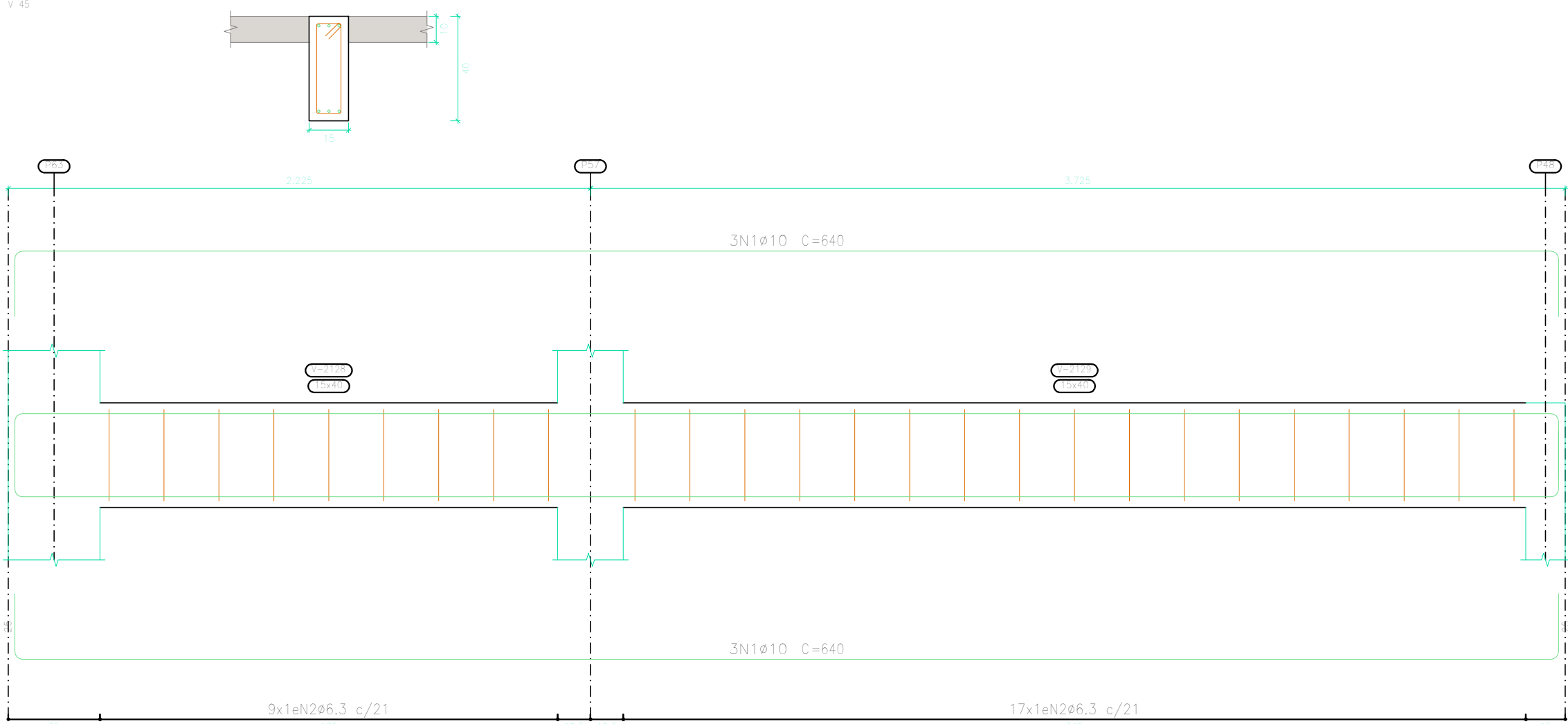
Elemento	Pos.	Diam.	Q.	Esquema (cm)	Comp. (cm)	Total (cm)	CA-50 (kg)	CA-60 (kg)
V 43	1	ø10	6		565	3390	20,9	
	2	ø6,3	20		100	2000	4,9	
						Total:	25,8	
					ø6,3:	4,9	0,0	
					ø10:	20,9	0,0	
					Total:	25,8	0,0	


V 44



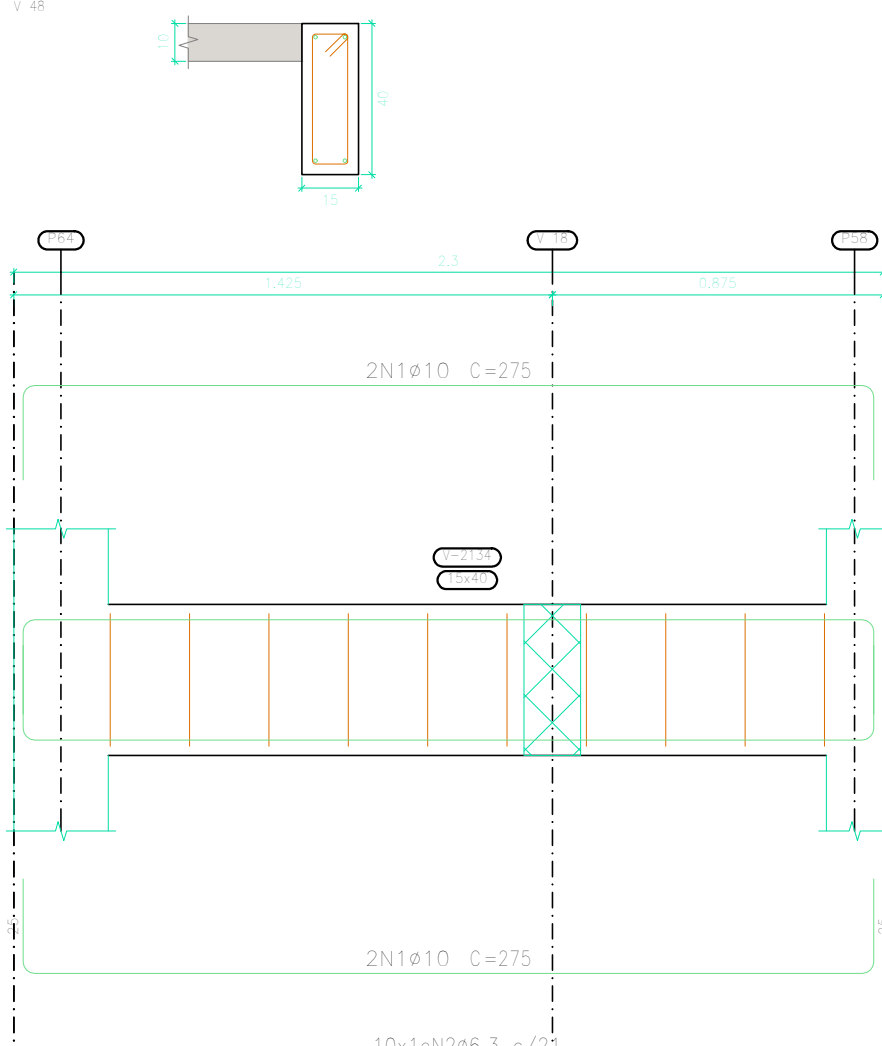
Elemento	Pos.	Diam.	Q.	Esquema (cm)	Comp. (cm)	Total (cm)	CA-50 (kg)	CA-60 (kg)	
V 44	1	ø10	5		770	3850	23,7		
	2	ø6,3	32		100	3200	7,8		
						Total:		31,5	
							ø6,3:	7,8	0,0
							ø10:	23,7	0,0
							Total:	31,5	0,0

V 45



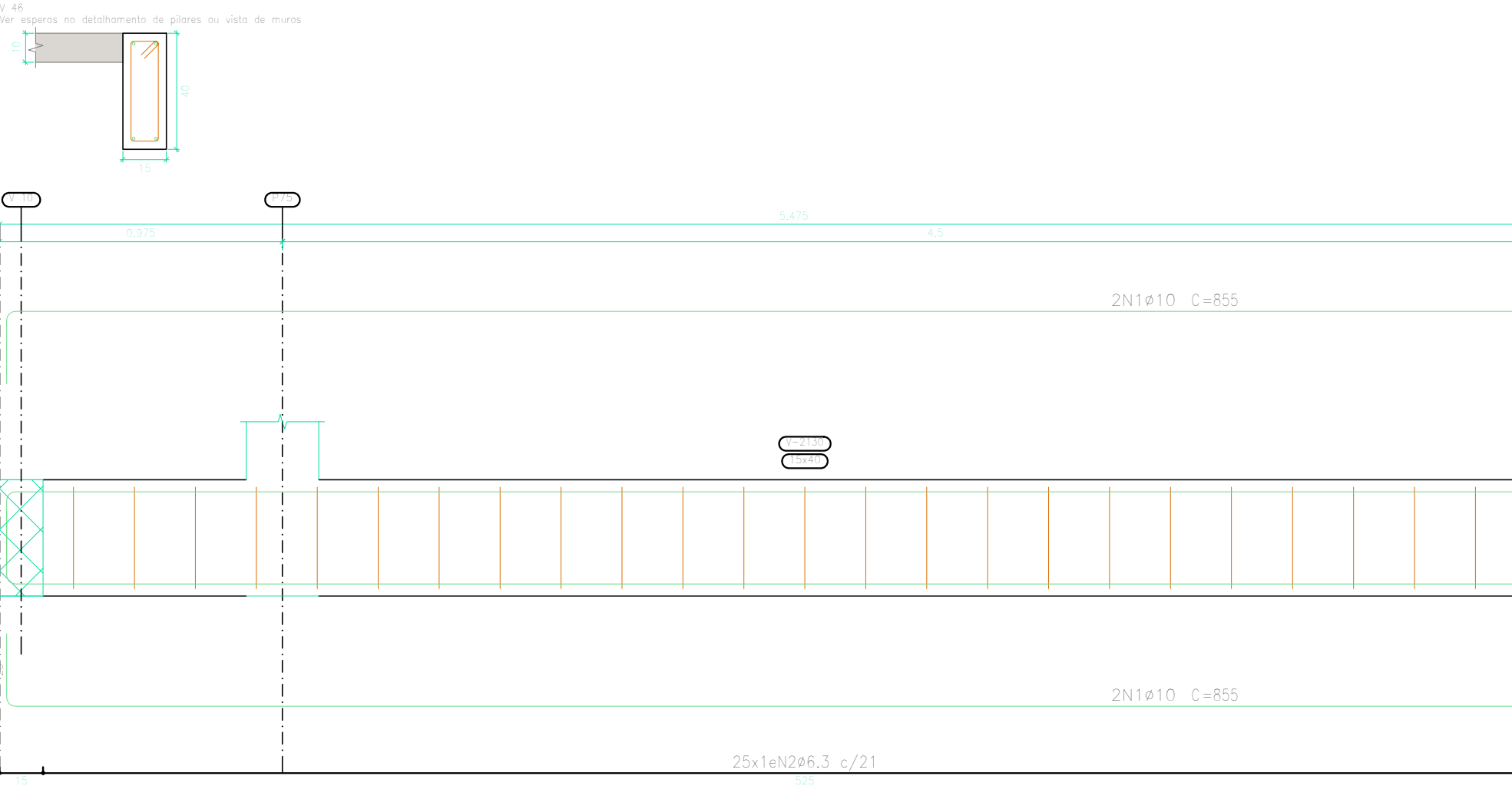
Elemento	Pos.	Diam.	Q.	Esquema (cm)	Comp. (cm)	Total (cm)	CA-50 (kg)	CA-60 (kg)
V 45	1	ø10	4		640	3840	23,7	
	2	ø6,3	26		100	2600	6,4	
						Total:	30,1	
						ø6,3:	6,4	0,0
					ø10:	23,7	0,0	
					Total:	30,1	0,0	



V 46



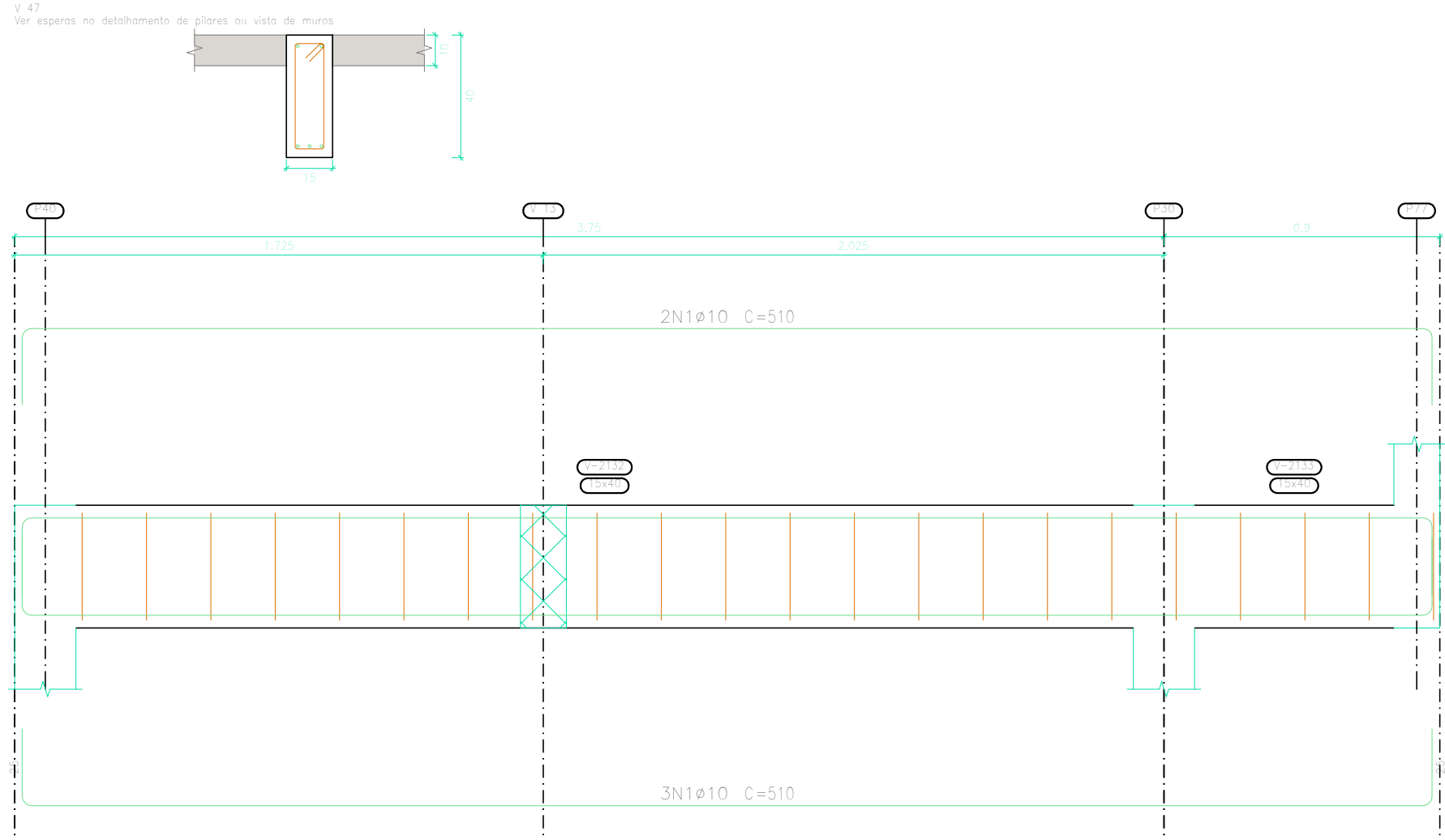
Elemento	Pos.	Diam.	Q.	Esquema (cm)	Comp. (cm)	Total (cm)	CA-50 (kg)	CA-60 (kg)
V 48	1	ø10	4		275	1100	6,8	
	2	ø6,3	10		100	1000	2,4	
						Total:	9,2	
						ø6,3:	2,4	0,0
					ø10:	6,8	0,0	
					Total:	9,2	0,0	

V 47



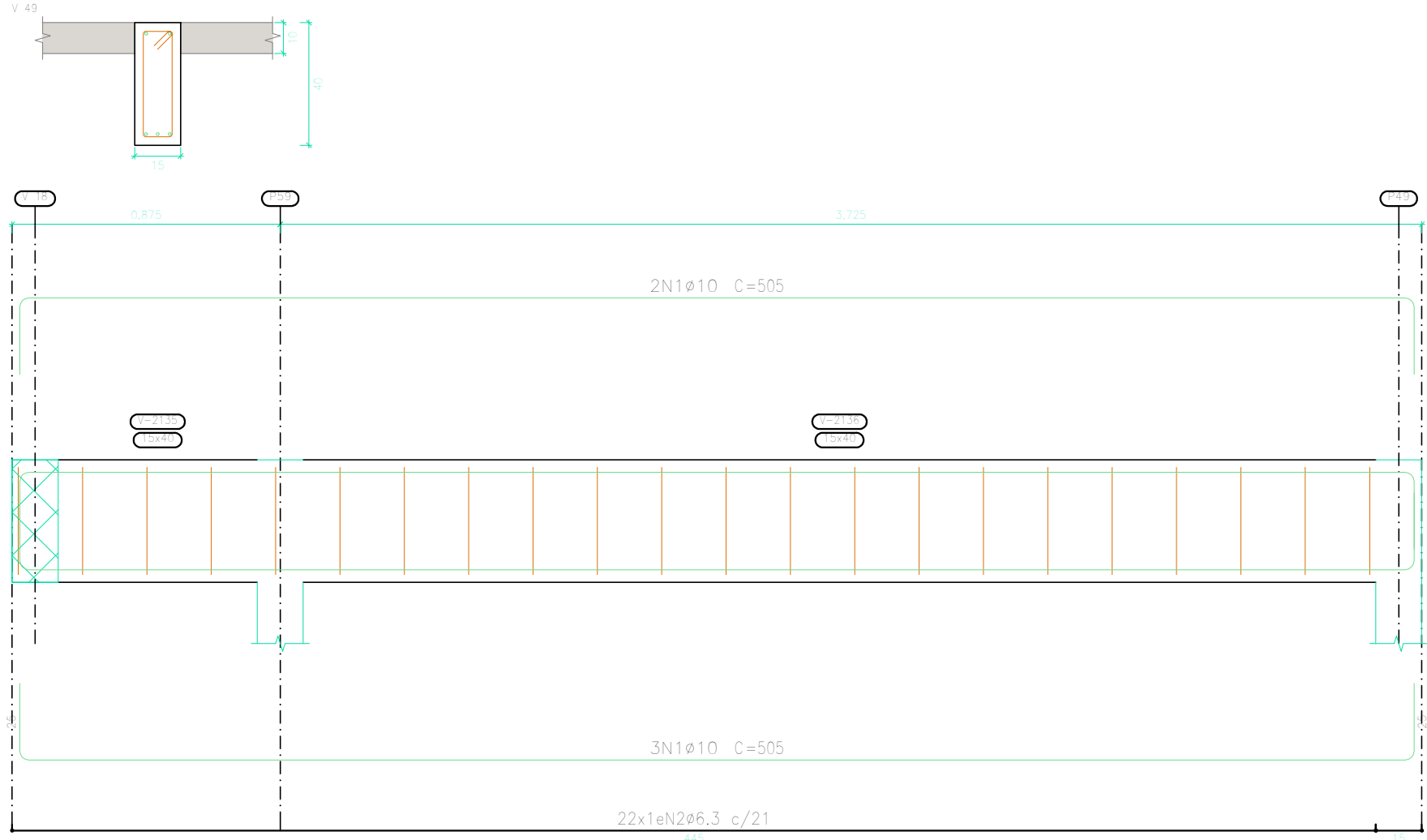
Elemento	Pos.	Diam.	Q.	Esquema (cm)	Comp. (cm)	Total (cm)	CA-50 (kg)	CA-60 (kg)
V 46	1	ø10	4		855	3420	21,1	
	2	ø6,3	17		100	3700	9,1	
						Totais:	30,2	
						ø6,3:	9,1	0,0
					ø10:	21,1	0,0	
					Totais:	30,2	0,0	



V 47



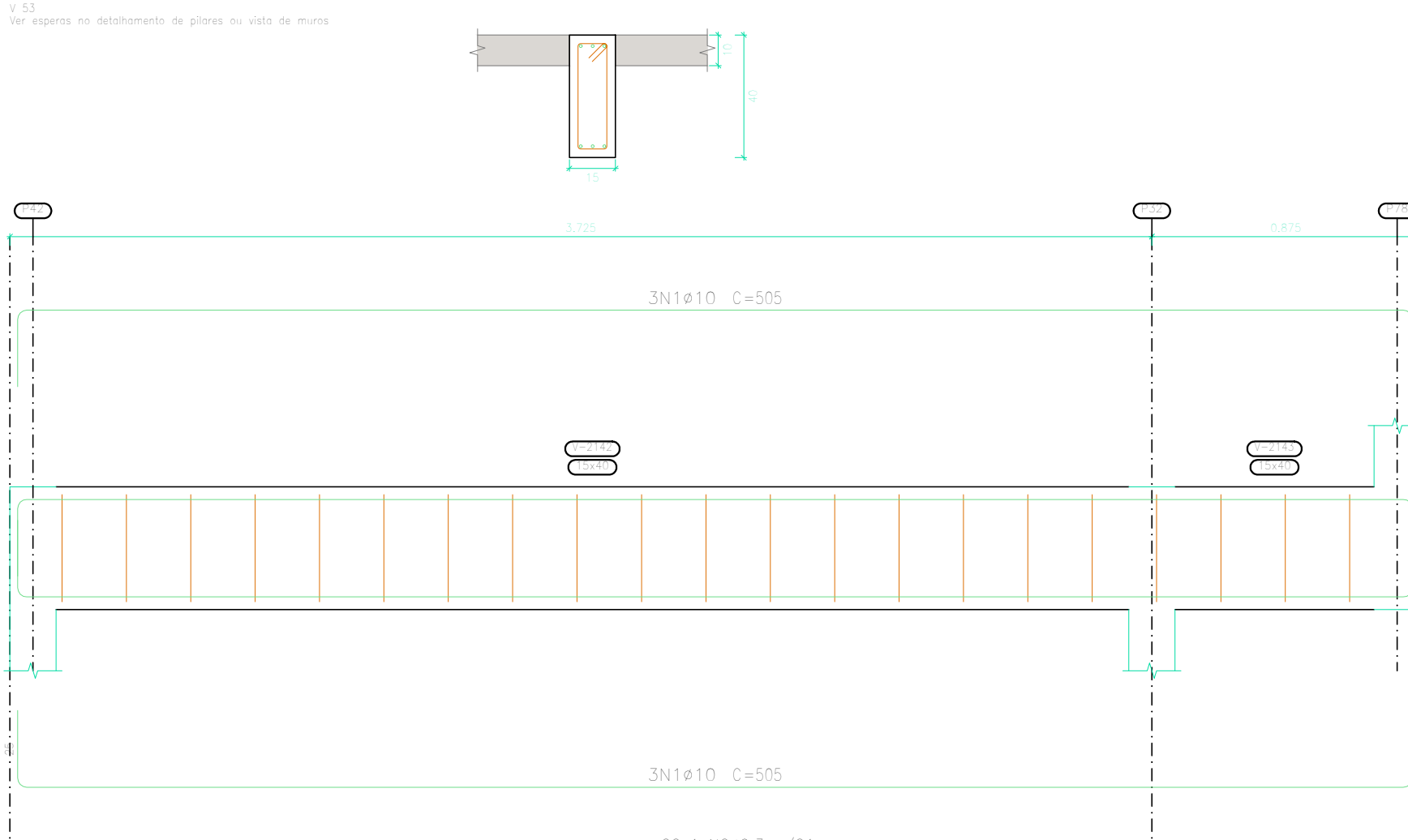
Elemento	Pos.	Diam.	Q.	Esquema (cm)	Comp. (cm)	Total (cm)	CA-50 (kg)	CA-60 (kg)	
V 47	1	ø10	5		510	2550	15,7		
	2	ø6,3	22		100	2200	5,4		
						Total:	21,1		
						ø6,3:	5,4	0,0	
					ø10:	15,7	0,0		
					Total:	21,1	0,0		



V 48



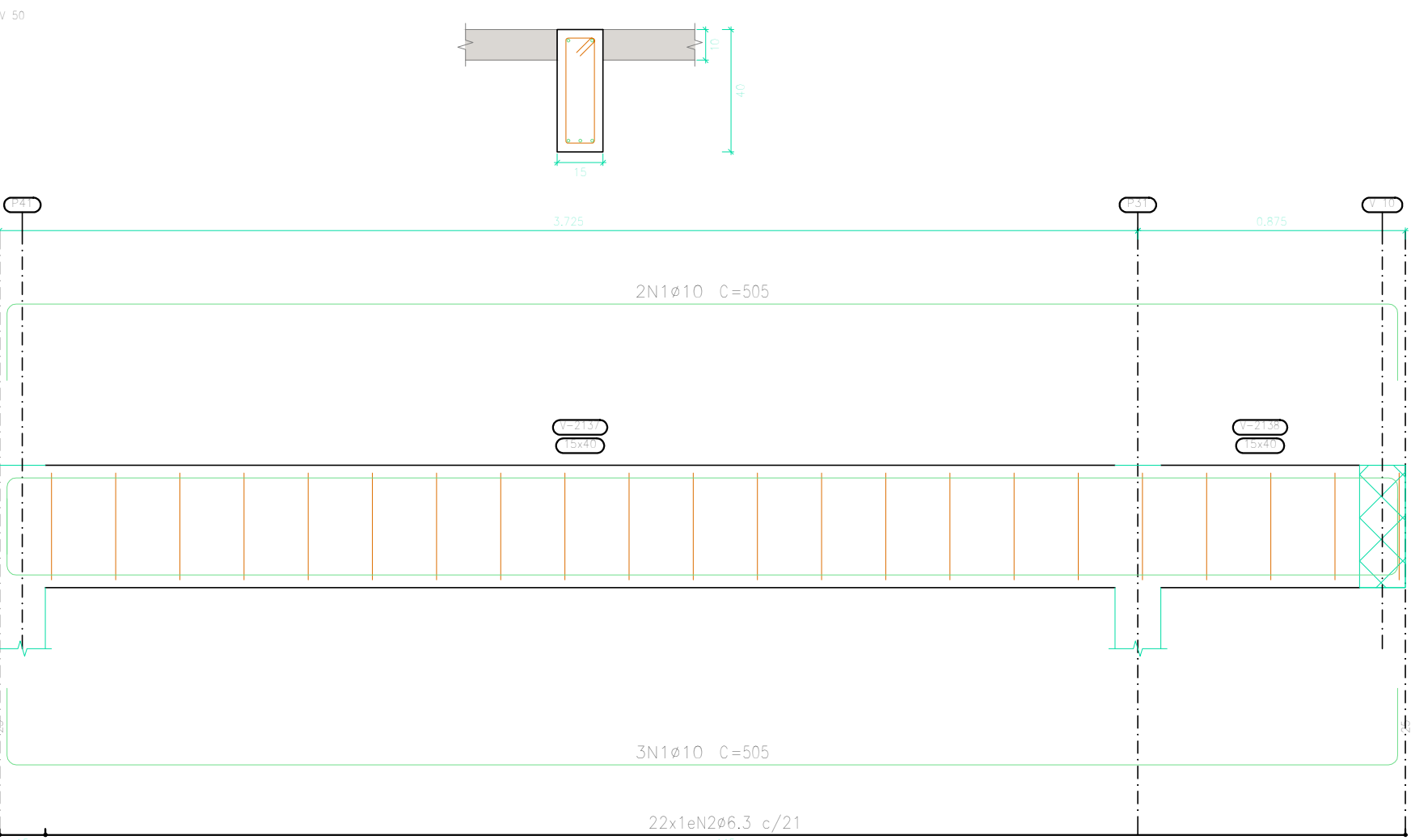
Elemento	Pos.	Diam.	Q.	Esquema (cm)	Comp. (cm)	Total (cm)	CA-50 (kg)	CA-60 (kg)
V 48	1	ø10	5		505	2525	15,6	
	2	ø6,3	22		100	2200	5,4	
						Total:	21,0	
						ø6,3:	5,4	0,0
					ø10:	15,6	0,0	
					Total:	21,0	0,0	



V 49



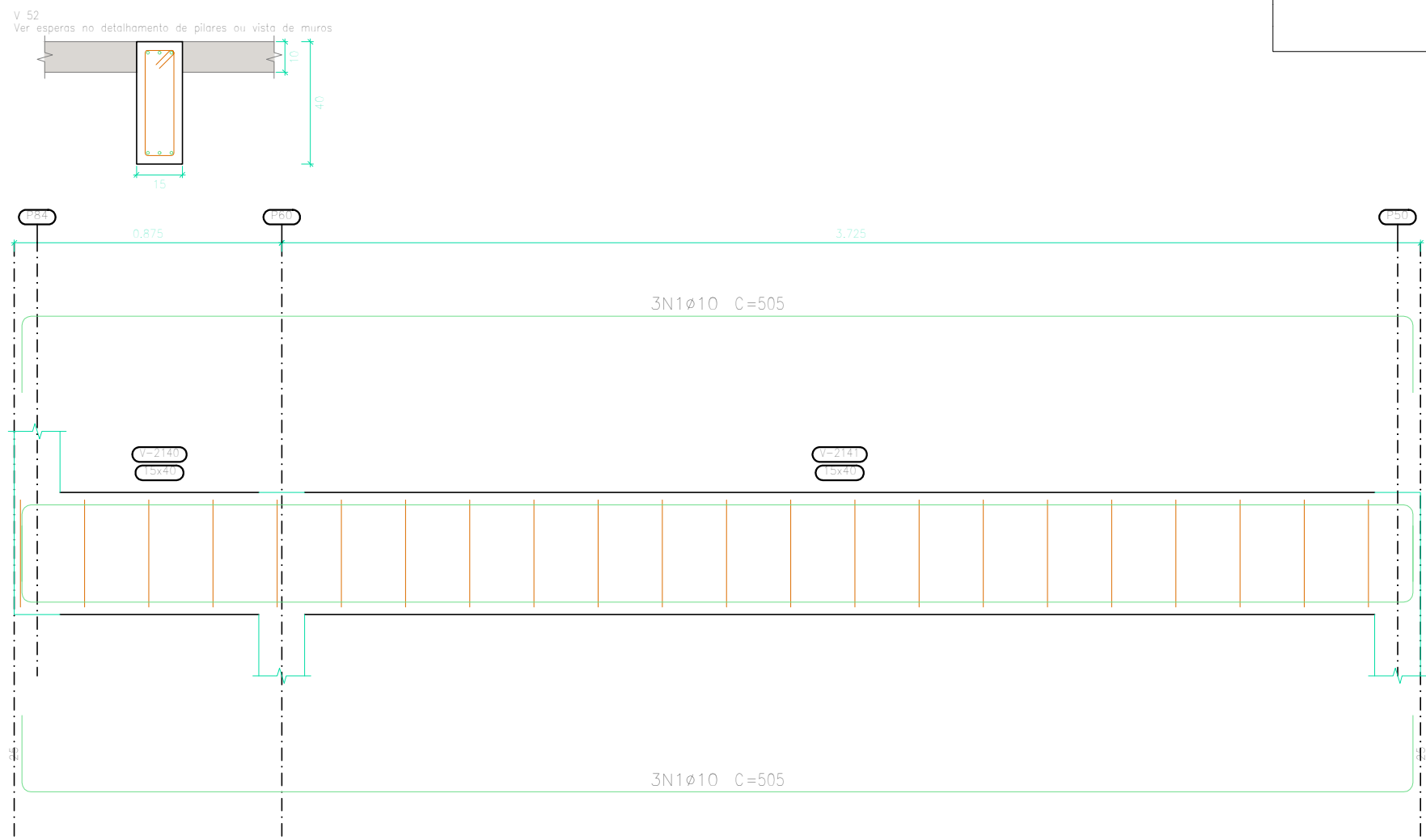
Elemento	Pos.	Diam.	Q.	Esquema (cm)	Comp. (cm)	Total (cm)	CA-50 (kg)	CA-60 (kg)
V 53	1	ø10	4		505	3030	18,7	
	2	ø6,3	22		100	2200	5,4	
						Total:	24,1	
						ø6,3:	5,4	0,0
					ø10:	18,7	0,0	
					Total:	24,1	0,0	



V 50



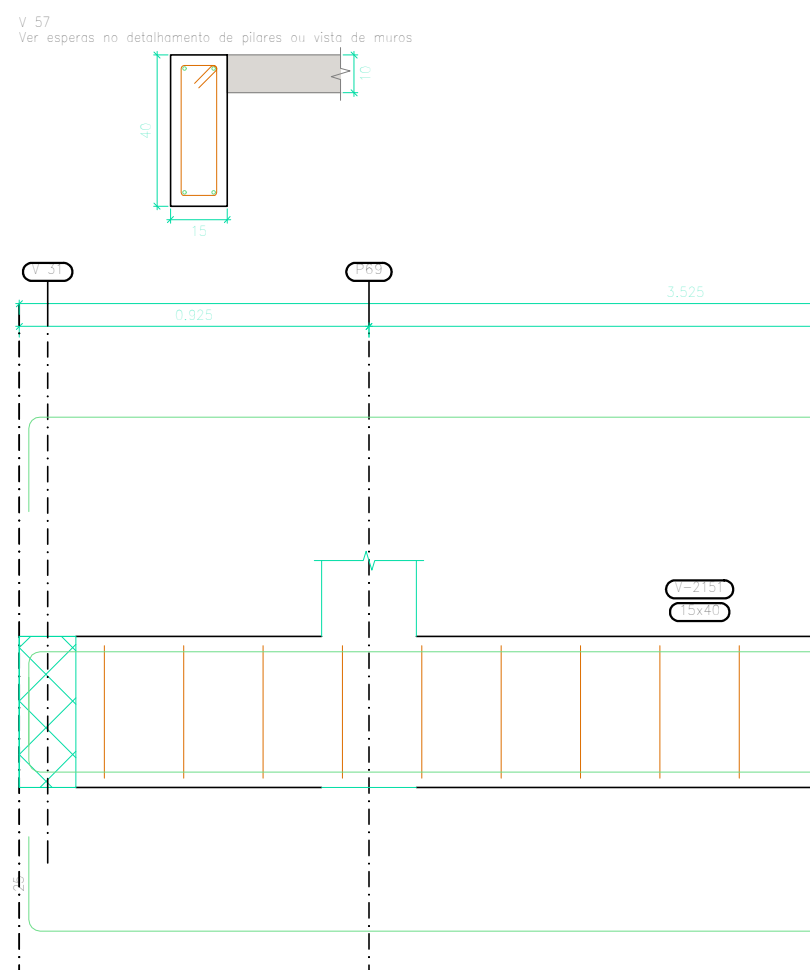
Elemento	Pos.	Diam.	Q.	Esquema (cm)	Comp. (cm)	Total (cm)	CA-50 (kg)	CA-60 (kg)
V 50	1	ø10	5		505	2525	15,6	
	2	ø6,3	22		100	2200	5,4	
						Total:	21,0	
								0,0
							15,6	0,0
					Total:	21,0	0,0	







V 51





Elemento	Pos.	Diam.	Q.	Esquema (cm)	Comp. (cm)	Total (cm)	CA-50 (kg)	CA-60 (kg)	
V 52	1	Ø10	6		505	3030	18,7		
	2	Ø6,3	22		100	2200	5,4		
							Totais:	24,1	
							Ø6,3:	5,4	0,0
						Ø10:	18,7	0,0	
						Totais:	24,1	0,0	

V 52

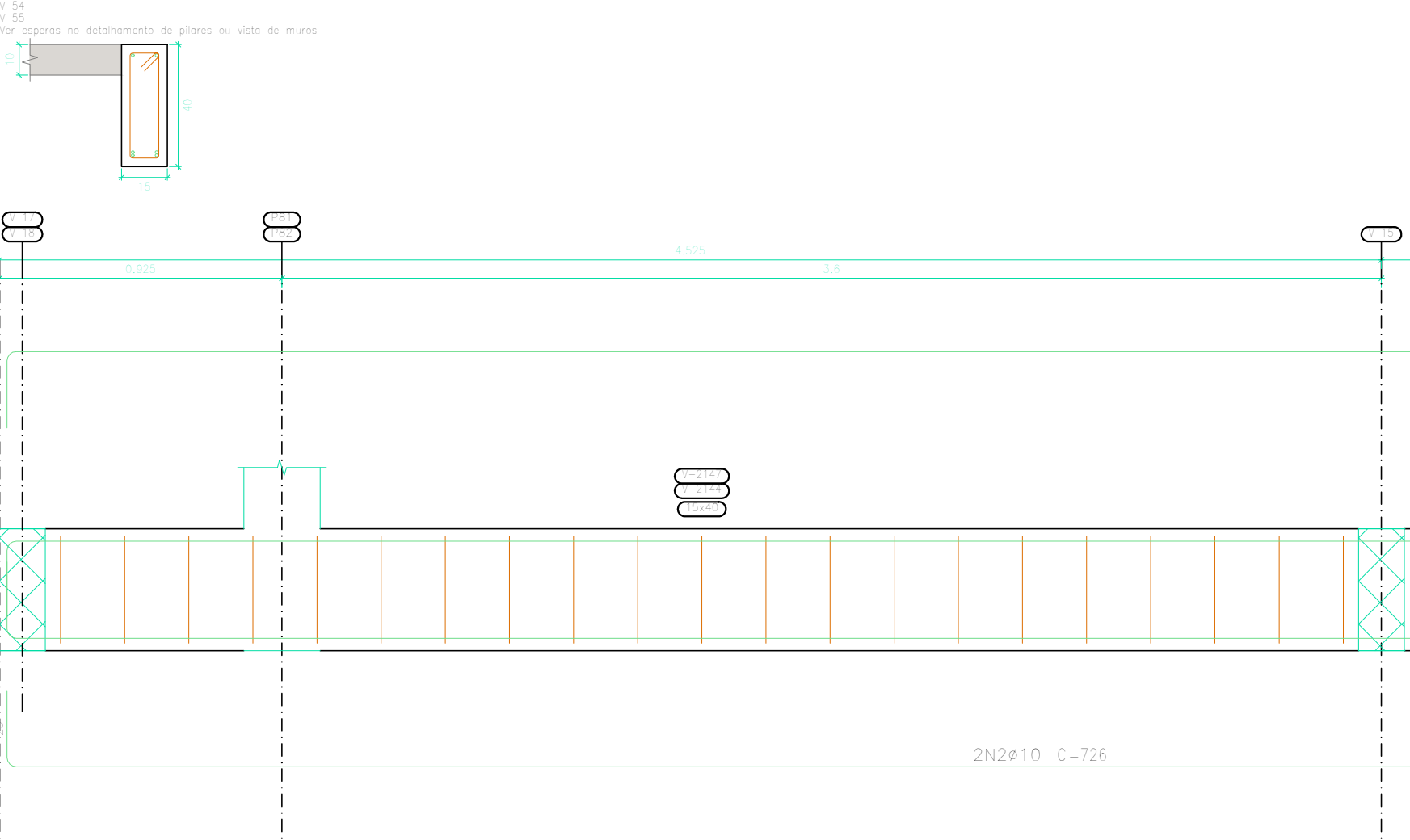


Elemento	Pos.	Diam.	Q.	Esquema (cm)	Comp. (cm)	Total (cm)	CA-50 (kg)	CA-60 (kg)	
V 54+55	1	ø10	2		1165	2330	14,4		
	2	ø10	2		725	1450	8,9		
	3	ø10	2		510	1020	6,3		
	4	ø6,3	52		100	5200	12,7		
							Total:	42,3	
							kg		
V 56	1	ø10	4		100	780	4,8		
	2	ø6,3	6		100	600	1,5		
							Total:	6,3	
							ø6,3:	26,9	0,0
							ø10:	64,0	0,0
						Total:	90,9		

Pos.	Diam.	Q.	Esquema (cm)	Comp. (cm)	Total (cm)	CA-50 (kg)	CA-60 (kg)
1	ø10	4		1050	4200	25,9	
2	ø6,3	47		100	4700	11,5	
Total:						37,4	
ø6,3:						11,5	0,0
ø10:						25,9	0,0
Total:						37,4	0,0

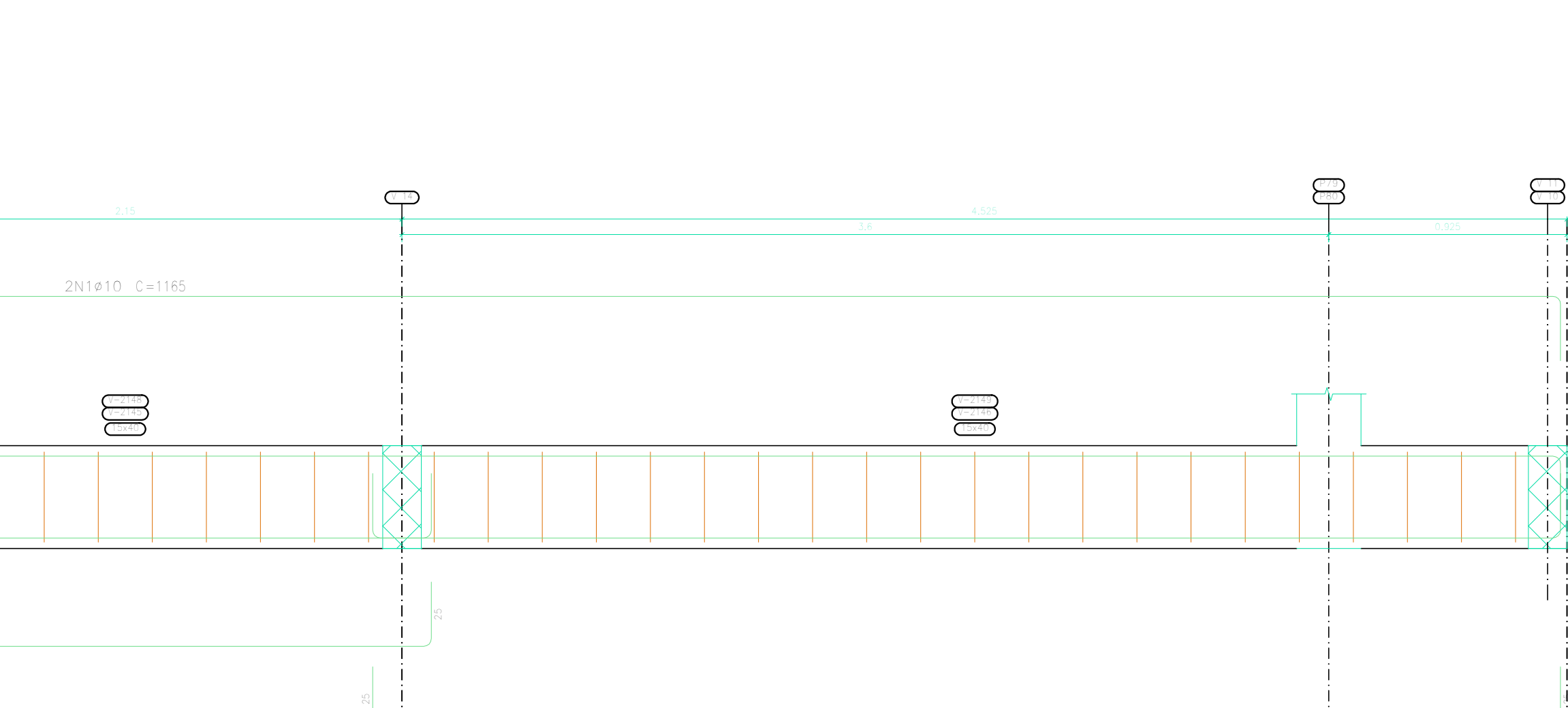
COBERTURA
Desenho de vigas
Concreto: C25, em geral
Aço das barras: CA-50 e CA-60
Aço das estribos: CA-50 e CA-60
Escala vigas 1:20
Escala seções 1:20
Escala aberturas 1:20

V 58



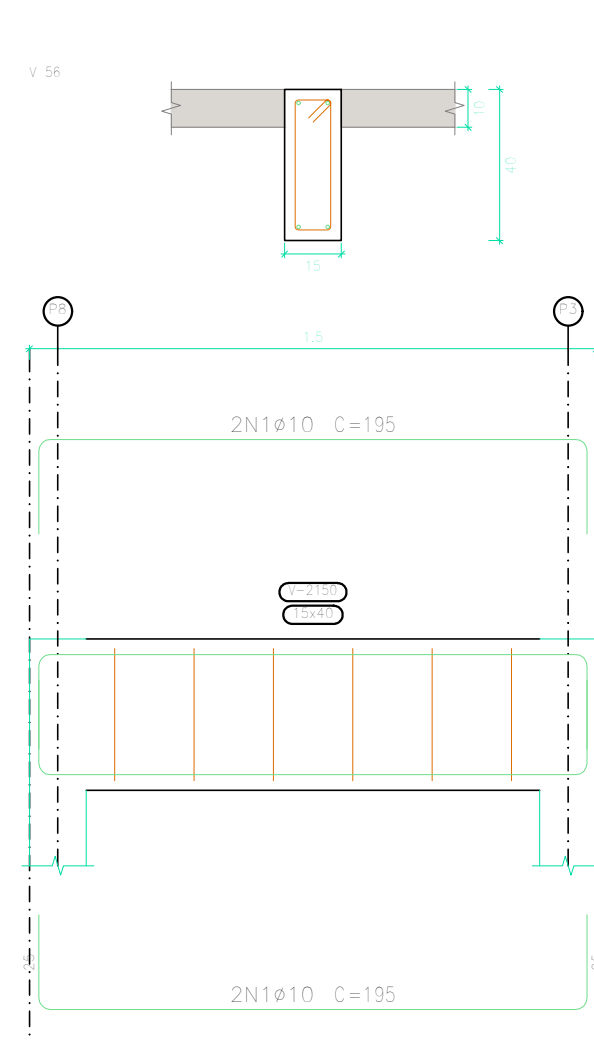
21x1ø10ø6,3 c/21

V 59



10x1ø10ø6,3 c/21

V 60



6x1ø10ø6,3 c/21



NOVA
FRIBURGO
PREFEITURA

SECRETARIA
DE OBRAS

CONSTRUÇÃO - UBS RUI SANGLARD

PROJETO BÁSICO DE ESTRUTURAS DA EDIFICAÇÃO

DESENHO DE VIGAS

SECRETÁRIO DE OBRAS:

Bernardo Coelho Verly - Matrícula: 62.009

SUBSECRETÁRIO DE PROJETOS E:
RESPONSÁVEL LEGAL:

Luan Leite Feijó - Matrícula: 115.288 - CREA/RJ: 2013102356

DATA: 09/10
FEV 2025
ESCALA: INDICADA
REVISÃO: R00
PROJETO: A0

OBSERVAÇÕES: